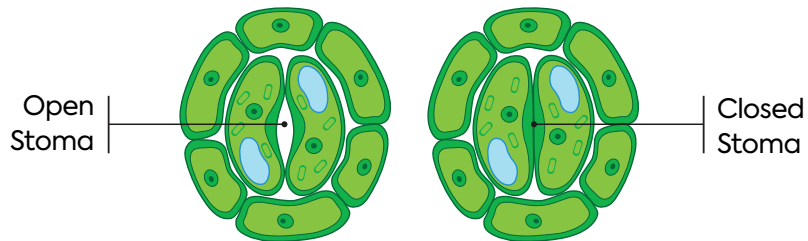


PLANT STOMATA 101



Dual Draft Integrated Airflow provides consistent under-canopy and over-canopy airflow, homogenizing the environment, opening the stomata and increasing transpiration.

THE ROLE OF STOMATA IN HEALTHY PLANT GROWTH

Stomata are pores located under the leaves and connect air space inside the leaf filled with water vapor and CO₂ gas with the air around the leaf. The air surrounding the leaf is made up of several layers, including a microclimate layer that is primarily still air that has no movement.

When there isn't appropriate under-canopy airflow, that still microclimate layer acts as insulation for the leaves, which can raise the temperature of the leaves, negatively impacting transpiration, reducing yield and creating an ideal environment for microbial and pest pressure.

**Eliminate
microclimates and
other pressures**

**Mechanically
stimulate the
stomata**

**Create optimal
delivery of CO₂**

“Dual Draft improves indoor air quality and plant performance for vertical farmers. The Dual Draft system forces air up from beneath the canopy, where it actually counts.”

- Brent VanZile, Southern Sky

DUAL DRAFT IS THE SOLUTION

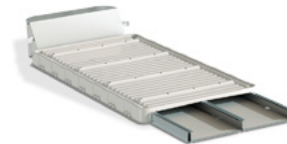
The only integrated product of its kind on the market, Dual Draft is the next evolution in vertical farming improving yield, quality, consistency and plant health through airflow.

Dual Draft Integrated Airflow Systems provide airflow, plant trays, drainage, and structural support, for vertical racking and single tier benching, in a fully integrated system. Delivering an average of over 14 meters per second at the outlets above and below the canopy.

DUAL DRAFT PRODUCTS



**HURRICANE
AIRBOX**



**DUAL DRAFT
TRAY SYSTEM**



**ZERO CLEARANCE
AIRBOX**

CONTACT

Mark@DualDraft.ag • 315.534.9278 • dualdraft.ag
